

**ELKAY®**

commercial  
products



ezH2O®

Bottle Filling Station



**NEW!** *Providing a rapid fill of filtered water to quench thirst and minimize plastic bottle waste in the environment!*

## **Great NEW Features!**

Introducing our new line of enhanced bottle filling stations with an updated look. Integrating our Green Ticker™ and visual filter monitor status into one area, for ease of viewing. Also available with a 5" screen option.

### **Energy Savings**

Bottle fillers can be scheduled to turn off the refrigeration during times of non-use to save on energy costs while continuing to dispense ambient water.

### **Automatic Filter Status Reset**

With the enhanced bottle fillers when you change the filter, the filter monitor is reset automatically.

### **System Diagnostics**

These units review their systems to ensure they are operating within normal operating levels. They provide assistance to make maintenance easier to troubleshoot. Scrolling alerts will appear on the visual display should any issue arise.

### **Low Energy LED Light**

The EZH2O now has a light added to the viewing area. This encourages use, assists with filling dark bottles, and illuminates dark hallways.



LZS8WSSP



**Enhanced Green Ticker™ and Visual Filter Monitor**



**Option available with a 5" LCD monitor**

The Enhanced Bottle Filling Stations now come available with a 5" LCD monitor screen option.



LZSTL8WSSVP



*Our EZH2O bottle filling stations are manufactured in Savanna, IL USA.*



## Quick

### Laminar Flow

A recessed orifice provides a clean fill with minimal splash that is 3 times faster than a standard drinking fountain.

## Clean

### Sensor Activated

Electronic sensor provides touchless sanitary operation with an automatic 20-second shut-off timer.

### Antimicrobial Plastic Components

To prevent the growth of mold and mildew.

### Integrated Basin Design

The bottle filler is now a part of the cooler basin for a cleaner, more seamless look.



## Green

### Green Ticker™

Indicates the number of 20 oz. bottles saved.

### Visual Filter Monitor

(filtered models only)  
Green, yellow and red LED lights signal the status of the filter.



## WaterSentry® Plus Filter

- 3000 Gallon capacity\*
- Quick, 1/4 turn for easy installation
- ANSI/NSF Standard 42 and 53

\*Capacity may vary depending on local water conditions.



## EZ Cooler Combos

The EZH20® bottle filler pairs up with the Elkar EZ with features such as the Flexiguard® Safety bubbler and push button operation. Available in stainless steel or light gray granite, filtered or non-filtered.

## EZ Retrofit

The EZH20 retrofit installs on existing EZ units. Available in filtered or non-filtered models.



LZWSRK



LZSTL8WSLK

Custom graphic panels available.



Our EZH20 bottle filling stations are manufactured in Savanna, IL USA.

## Mechanically Activated Cooler Combos

The EZH2O works along side an EMABF Cooler. Convenient hydration along with a mechanical cooler so water is always available. Self closing mechanically activated push bars on both front and sides operate even during power disruption.

Available in stainless steel or light gray granite, filtered or non-filtered.



LMABF8WSSK



LVRCGRN8WSK

## Vandal-Resistant - Green Coolers/Cooler Combos

The Vandal Resistant Green units are our most efficient cooler combination. They provide greater energy efficiency, consume less water and use less refrigerant than any other comparable water cooler on the market. Primarily constructed with 60% recycled content stainless steel, this highly durable water cooler utilizes a vandal-resistant StreamSaver™ bubbler reducing the amount of water wasted down the drain.

*Based on average market performance, the VRCGRN offers....*

- 50% greater energy efficiency\*
- 40% less water usage\*
- 0% ozone-depletion potentials



LZSTLG8WSSK

## EZ Green Cooler Combo

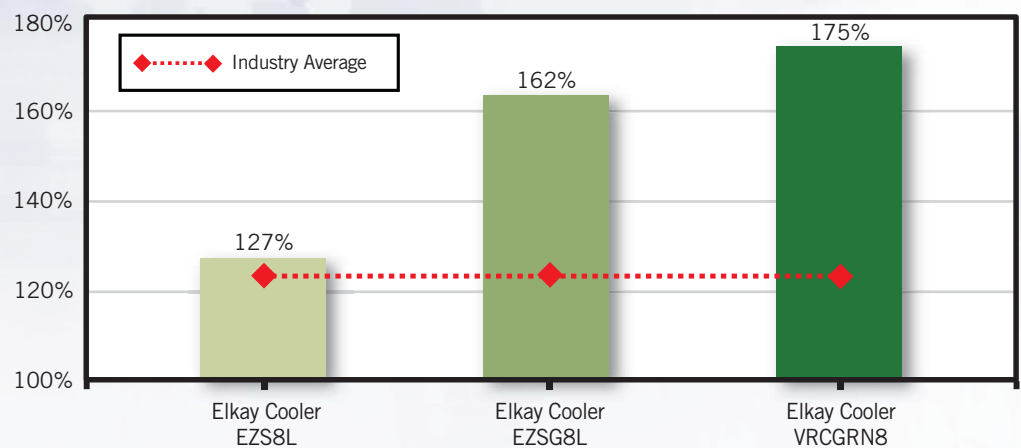
Our EZ Green family offers the features you have come to know with Elkay such as the Flexiguard® Stream Saver™ water efficient bubbler and push button operation while including our energy efficient refrigeration system.

Available in stainless steel or light gray granite, filtered or non-filtered.

**Elkay GreenSpec® product submittal report June 17, 2008**

### Energy Efficiency Comparison Chart\*

\*Based on the maximum amount of energy ("standard minimum energy factor") that a cooler uses to provide a specified gallons of chilled drinking water per hour as specified in CAN/CSA C-815.



*Our EZH2O bottle filling stations are manufactured in Savanna, IL USA.*



## Surface Mount

Can be used in locations with limited wall depth or in conjunction with a fountain or remote chiller.

Available with electric display and now available in a mechanically activated version with battery-powered green counter and visual filter monitor. Can be used in conjunction with a fountain or a remote chiller.



LZWSSM



LMASMB



VRCTL8WSK

## Vandal-Resistant

Ideal for high traffic applications as educational facilities or indoor recreational areas. Full stainless steel construction is not only durable, but easy to clean. Comes with vandal-resistant bubbler(s) and push button activated bottle filler. Non-filtered versions are rated for outdoor use.



*Our EZH2O bottle filling stations are manufactured in Savanna, IL USA.*



## Architectural Fountain

The sleek design of our architectural fountains integrated with an EZH2O is ideal for office buildings and hospitals. Retrofits available to convert current bilevel SwirlFlo® and Soft Sides® architectural fountains into bottle fillers. Retrofits are also available on current refrigerated bi-level SwirlFlo® and Soft Sides® architectural fountains to incorporate a bottle filler.

Available in SwirlFlo® (pictured right) or Soft Sides®, refrigerated/nonrefrigerated or filtered/nonfiltered.



LZWS-LRPBM28K

LZWS-SFGRN8K



## In Wall Units

The EZH2O can be installed alone or along with architectural fountains. Flush with wall for a seamless look makes these models ideal for office buildings or indoor recreational facilities.

Product available to pair along with architectural units or with a remote chiller.

Available in filtered/non-filtered, refrigerated or non-refrigerated.

LZWSM8K



*Our EZH2O bottle filling stations are manufactured in Savanna, IL USA.*

## Outdoor Bottle Filling Stations

Perfect for parks, golf courses, or pool areas. The outdoor bottle filling stations provide hydration on the go. Made of durable cold rolled steel and immersed in an E-Coat for the ultimate corrosion protection.

Flexible configurability to meet any application with freeze resistant models available.

Available in 12 color options with textured finishes.

LK4420BF1UDB  
(Shown in standard evergreen)



## Color Options



Evergreen  
(Standard)



Blue



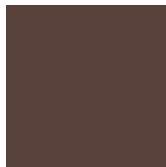
Purple



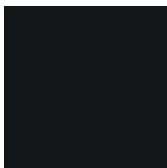
Terracotta



Red



Brown



Black



Orange



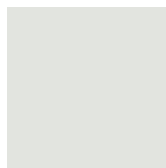
Yellow



Gray



Beige



White



LK4430BF1U  
(shown in blue)



Our EZH2O bottle filling stations are manufactured in Savanna, IL USA.





# ELKAY

## Tradition. Vision. Conviction.

Elkay was founded as a small sink manufacturing company on the North side of Chicago. We have grown significantly from these humble beginnings, but our dedication to making innovative products and exceptional customer service remains the same.

Today, Elkay is a leading manufacturer of stainless steel sinks, faucets, water coolers, drinking fountains and bottle filling stations, delivering unprecedented levels of style and function to plumbing professionals.

We are driven by core values that have evolved since 1920, values that are reflected in every product we manufacture, and our conviction to provide total satisfaction to every customer, every day.

## American Pride. Family Owned. A Lifetime Tradition.

Like your family, the Elkay family has values and traditions that endure. For almost a century, Elkay has been an American-owned and operated company, providing thousands of jobs that support our families and communities. We are proud to say ELKAY USA.

Discover the  
professional's choice.™



**BELLAQUA**  
The Cooler Choice

251 Paterson Avenue • East Rutherford, NJ 07073  
1-800-562-8872 • 201-460-8379 • Fax 201-460-7172 • Email: [Joel@Bellaqua.net](mailto:Joel@Bellaqua.net)  
[www.Bellaqualnc.com](http://www.Bellaqualnc.com)